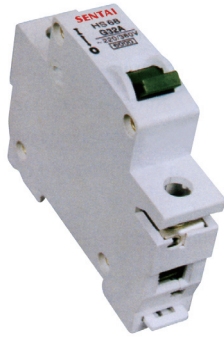
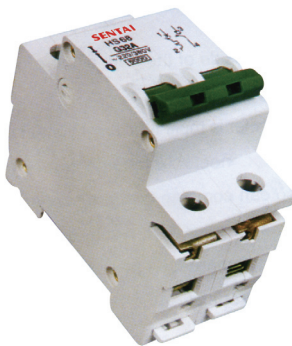


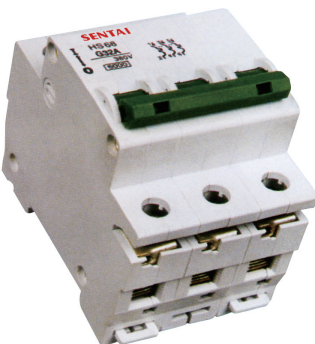
HS series Mini Circuit Breaker



HS 1P



HS 2P



HS 3P

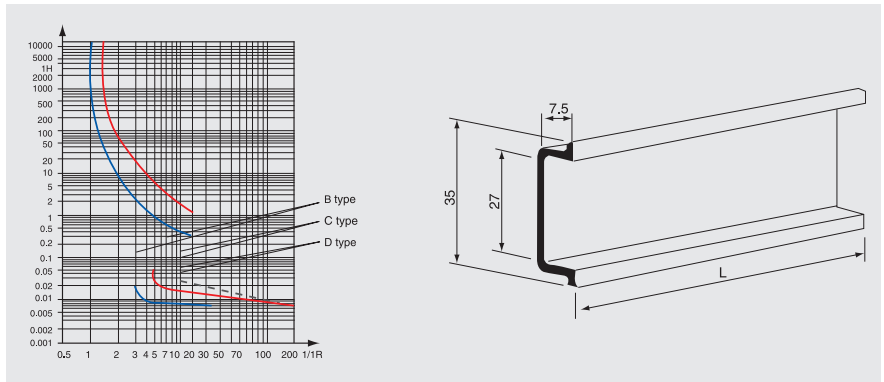
APPLICATIONS

The products of HS belong to the advanced level of the nineties in the international instead of the older generation of HS. They have protective function as shortage as overload, and are used in lighting distribution system in industry, commerce and dwelling, and protecting fractional electric motors, and they also have many merits of high protective grade(up to IP20), high breaking capacity, reliable sensitive action, convenient, multiple assembling, long life etc. They are mainly adapted to the circuit of AC 50Hz, 230V in single pole, 400V in double, three, four poles for protecting overload and short circuit. Meanwhile, they are also used in turning on or off the electric apparatus and lighting circuit under the normal condition.

SPECIFICATION

Poles (P)	1, 2, 3
Rated voltage (V)	230/240
Mechanical and electrical life	(O-C) not less than 6000 operations
Rated current (A)	1,2,3,4,6,10,16,20,25,32,40,50,63
Protective grade	IP20
Breaking capacity	(IEC60898) 6kA

CHARACTERISTIC CURVE(BS/IEC)



DIMENSIONS

