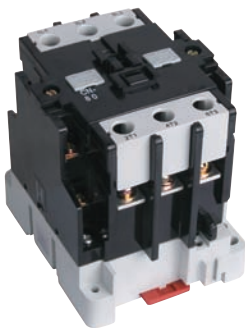


CN series AC Contactor



CN-11



CN-80

APPLICATION

CN series AC contactor is suitable for AC 50Hz or 60Hz, voltage up to 660V, current up to 60A circuit, five models of CN-11, 16, 18, 25, 35 are available. They are able to assemble building block, auxiliary contactor group, thermal relay & accessories etc, to form multifunction series products.

TECHNICAL SPECIFICATION

Type	CN-11	CN-16	CN-18	CN-25
Rated insulated voltage (V)	660V	660V	660V	660V
Rated heat current (A)	25	25	35	50
Capacity of 3 phase squirrel-cage motor AC3 (kW)	220V	3	4	5.5
	380V	4	5.5	9
	350V	5.5	7.5	11

Type	CN-35	CN-50	CN-65	CN-80
Rated insulated voltage (V)	660V	660V	660V	660V
Rated heat current (A)	60	80	90	110
Capacity of 3 phase squirrel-cage motor AC3 (kW)	220V	11	18	20
	380V	18.5	22	25
	350V	22	25	30