

LC1-F series AC Contactor

APPLICATION

LC1-F series AC contactor is applicable to the circuits up to the rated voltage 1000V AC 50Hz or 60Hz, rated current up to 780A, for long distance breaking circuit and frequently starting or control the motor. It also can be used for the control of distribution circuits of rated current from 220A to 1600A.

SPECIFICATION

Type		LC1-F115	LC1-F150	LC1-F185	LC1-F225	LC1-F265
Rated operation current (A)	AC-1	115	150	185	225	265
	AC-3	200	250	275	315	350
Standard power ratings of 3-phase motors AC-3 (kW)	220V	30	40	55	63	75
	380V	55	75	90	110	132
	415V	59	80	100	110	140
	440V	59	80	100	110	140
	500V	75	90	110	129	160
	600V	80	100	110	129	160

Type		LC1-F330	LC1-F400	LC1-F500	LC1-F630	LC1-F780
Rated operation current (A)	AC-1	330	400	500	630	780
	AC-3	400	500	700	1000	1600
Standard power ratings of 3-phase motors AC-3 (kW)	220V	100	110	147	200	220
	380V	160	200	250	335	400
	415V	180	200	280	375	425
	440V	200	250	295	400	425
	500V	200	257	355	400	450
	600V	200	280	335	450	475



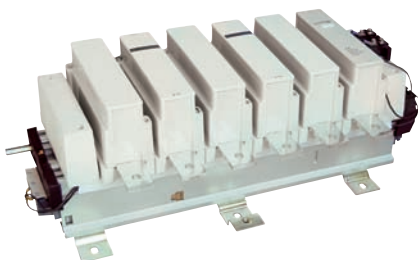
LC1-F115



LC1-F150

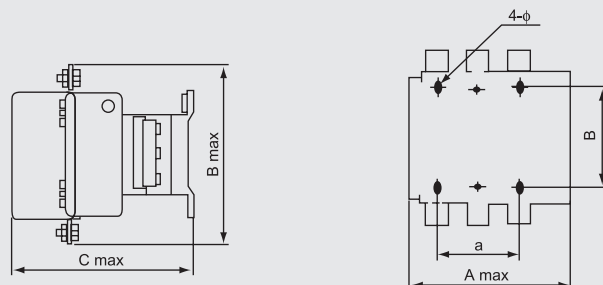


LC1-F225



LC1-F780

DIMENSIONS (mm)



Type	Amax	Bmax	Cmax	a	B	φ
CXC2-F115、F150	165	165	172	80	106/120	6.5
CXC2-F185、F250	170	175	182	80	106/120	6.5
CXC2-F225	170	198	182	80	106/120	6.5
CXC2-F265	202	205	215	96	106/120	6.5
CXC2-F330	215	208	220	96	106/120	6.5